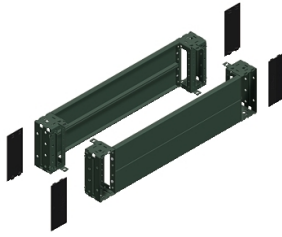


# Product datasheet

Specifications



## Spacial SF/SM front plinth - 200x800 mm

NSYSPF8200

⚠ Discontinued on: Nov 1, 2020

⚠ Discontinued

### Main

Range	Spacial
Accessory / Separate Part Category	Enclosure accessory
Product Or Component Type	Front and rear plinth
Application	Multi-purpose Electronic application Compartmentalised application
Nominal Dimensions Of The Housing	-
Device Composition	fixing elements 4 corner cover 4 corner 2 front panel 2 rear panel
Range Compatibility	Spacial Spacial SF Spacial Spacial SM Spacial Spacial SD Spacial Spacial S3D
Mounting Support	Plinth side panels

### Complementary

Fixing Mode	By fixing element - on structure location
Colour	Grey (RAL 7022)
Surface Finish	Epoxy-polyester powder
Permanent Permissible Load	1300 kg
Height	200 mm
Width	Nominal: 800 mm

### Environment

Ip Degree Of Protection	IP20 (complete plinth)
Ik Degree Of Protection	IK10

### Packing Units

Unit Type Of Package 1	PCE
Number Of Units In Package 1	1
Package 1 Height	20.000 cm
Package 1 Width	21.000 cm

<b>Package 1 Length</b>	81.500 cm
<b>Package 1 Weight</b>	9.000 kg
<b>Unit Type Of Package 2</b>	PAM
<b>Number Of Units In Package 2</b>	28
<b>Package 2 Height</b>	160.000 cm
<b>Package 2 Width</b>	100.000 cm
<b>Package 2 Length</b>	120.000 cm
<b>Package 2 Weight</b>	265.000 kg

## **Contractual warranty**

<b>Warranty</b>	18 months
-----------------	-----------

## Sustainability

**Green Premium™ label** is Schneider Electric's commitment to delivering products with best-in-class environmental performance. Green Premium promises compliance with the latest regulations, transparency on environmental impacts, as well as circular and low-CO<sub>2</sub> products.

**Guide to assessing product sustainability** is a white paper that clarifies global eco-label standards and how to interpret environmental declarations.

[Learn more about Green Premium >](#)

[Guide to assess a product's sustainability >](#)



Transparency RoHS/REACH

## Well-being performance

Mercury Free

Rohs Exemption Information Yes

## Certifications & Standards

Reach Regulation [REACH Declaration](#)

Eu Rohs Directive Pro-active compliance (Product out of EU RoHS legal scope)

China Rohs Regulation [China RoHS declaration](#)  
Product out of China RoHS scope. Substance declaration for your information

Environmental Disclosure [Product Environmental Profile](#)

Circularity Profile No need of specific recycling operations