

# AC031S

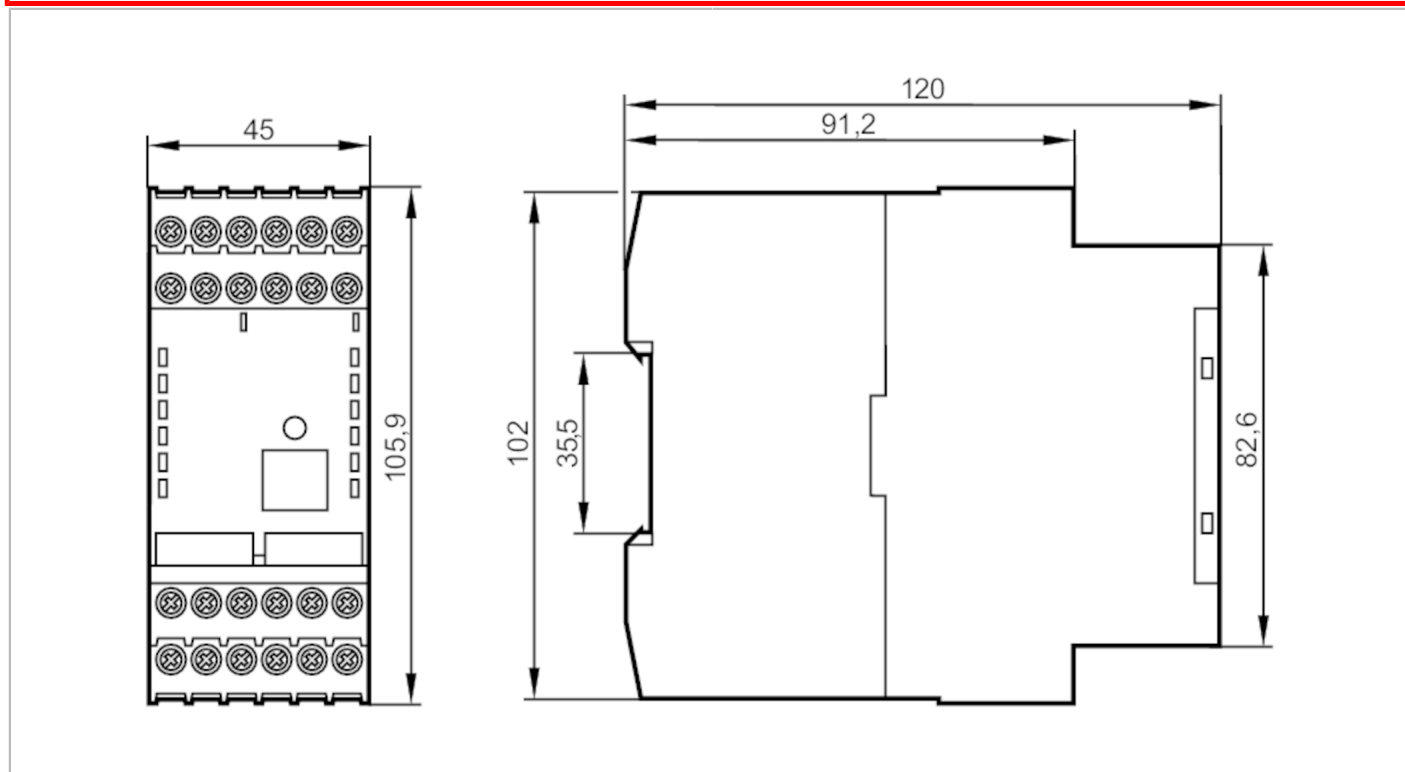


## AS-Interface safety monitor

Safety mon/1 ch. enhan. net

Status Archive

/AC032S



### Electrical data

Operating voltage tolerance	[%]	15
Operating voltage	[V]	24 DC
Max. current consumption from AS-i	[mA]	45
Einschaltspitzenstrom	[mA]	600

### Interfaces

#### RS232

Transmission rate	9600 Baud
-------------------	-----------

### Operating conditions

Ambient temperature	[°C]	-20...60
Storage temperature	[°C]	-30...70
Protection	IP 20; (Only suitable for use in electrical operating rooms or control cabinets with minimum protection rating IP54.)	

### Tests / approvals

EMC	EN 50081-2	(1993)
	EN 61000-6-2	(1999)
	EN 60947-5-1	(2000)
	EN 60204-1	



## AS-Interface safety monitor

Safety mon/1 ch. enhan. net

Safety classification	
ISO 13849-1	PL: e
IEC 61508	SIL 3
Mission time TM [h]	175200
Mission time TM (additional indication)	20 years
AS-i classification	
AS-i profile	7.F
AS-i I/O configuration [hex]	7
AS-i ID code [hex]	F
AS-i certificate pending	yes
Mechanical data	
Weight [g]	384
Materials	PA black
Remarks	
Notes	discontinued article
Pack quantity	1 pcs.
Electrical connection	

AS-i +	Connection AS-i
AS-i -	Connection AS-i
AS-i S+ / AS-i S-	Safe AS-i output for actuator monitoring or connection to another AS-i network
L+	+24V DC supply
M	GND reference earth
FE	functional earth
1.Y1	EDM 1 input feedback circuit / output circuit 1
1.Y2	start input output circuit 1
1.13	output switching element 1 output circuit 1
1.14	output switching element 1 output circuit 1
1.23	output switching element 2 output circuit 1
1.24	output switching element 2 output circuit 1
1.32	Safety ON / signal output output circuit 1
2.Y1	EDM2 input feedback circuit / output circuit 2
2.Y2	start input output circuit 2
2.32	Safety ON / signal output 2 output circuit 2

Status Archive

/AC032S